



Management  
System  
ISO 9001:2008

www.tuv.com  
ID 9105010483

# TDA

## Double Inlet

Forward-curved blade centrifugal fans

Double inlet with single, double and triple impeller

SR



R



T2R



T3R



L



The TDA double inlet centrifugal fans are manufactured in galvanized steel, quality Z-275, with free output shaft prepared for belt driven transmission. Include double shaft end to facilitate the assembly in eight possible orientations.

The forward type impeller is manufactured with tabbed construction which gives the fan great rigidity and high performance. The bearings are stiff, self aligning ball bearing type, sealed and lubricated for life.

Designed for low and medium pressures, TDA fans are manufactured in three constructions (series) depending on the limit of use: Light (L), Semi-reinforced (SR) and Reinforced (R).

To complete the range, there are also available series with double impeller (tandem) for the light, semi-reinforced and reinforced series, and with triple impeller for the reinforced series only.

The range of TDA models covers twenty sizes, from 7/7 to 30/28, one of the most complete ranges in the market, handling flow rates up to 162.400 m<sup>3</sup>/h and total pressures up to 1.420 Pa. They cover temperature ranges from -20°C to 80°C or 110°C depending on the series.

“TECNIFAN fans are manufactured with high precision machinery designed by our I+D+i department (Investigation, Research & Innovation), under the ISO 9001 Quality Standard Regulation certified by Internationally Accredited Certification Organism”.



## Quality features

### **Forward-Type Impeller**

Double inlet impeller integrated by: inserted blades (tabbed construction), central plates, side crowns and fixing hub for the shaft connection.

### **Side Plates**

Side plates are built in a single piece, on each side the inlet cones are embedded in the side plates.

### **Bearing Support**

For the large models of SR and R series (models from 20/15), the bearings are supported by a reinforced frame, specially designed to give rigidity and stability to the whole assembly.



### **Deflector**

Aerodynamically designed to avoid possible turbulences. The union to the scroll is realized by means of a system of cuts and screws that allows its disassembly for an easy extraction of the impeller.

### **Support Feet (optional)**

Manufactured in galvanized steel with stamped reinforcements, supplied with screws and rubber antivibration mounts for the assembly.



### **Cubic Frame**

Installed in the R-series, the reinforced structure provides great rigidity to the fan and allows the assembly in four possible orientations by hand.

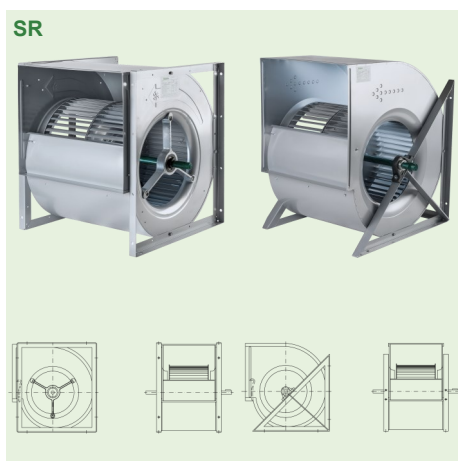
## Range of TDA fans

Fan Size	L - Light		SR - Semi-reinforced			R - Reinforced			
	7/7 - 9/7 - 9/9 - 10/8 - 10/10 12/9 - 12/12 - 15/11 - 15/15 18/13 - 18/18		7/7 - 9/7 - 9/9 - 10/8 - 10/10 12/9 - 12/12 - 15/11 - 15/15 18/13 - 18/18		20/15 - 20/20 - 22/15 22/20 - 22/22 - 25/20 25/25 - 30/20 - 30/28	7/7 - 9/7 - 9/9 - 10/8 - 10/10 12/9 - 12/12 - 15/11 - 15/15 18/13 - 18/18	20/15 - 20/20 - 22/15 22/20 - 22/22 - 25/20 25/25 - 30/20 - 30/28		
Impeller	Single	Double	Single	Double	Single	Single	Double/Triple*	Single	Double/Triple
Support Cross-arm	✓	✓	✓	✓		✓			
Bearing support					✓		✓	✓	✓
Without frame	✓	✓							
Side frames			✓	✓		✓	✓		
Triangular frame					✓				
Cubic frame						✓	✓	✓	✓

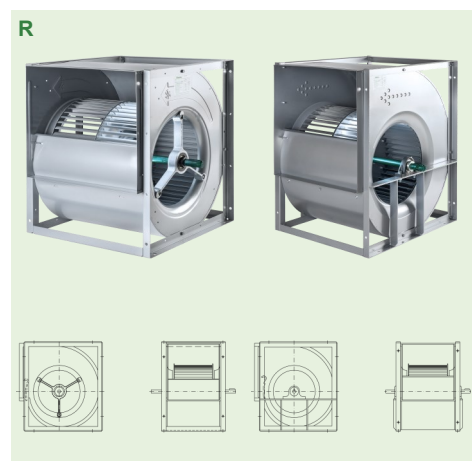
\* Size 7/7 is only available with single impeller.



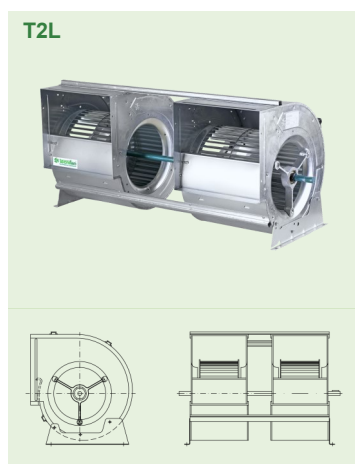
The construction of **light series** allows the mounting of support feet, motor support or by a motor support bench. With flow rate and total pressure values up to 17.300 m<sup>3</sup>/h and 1.000 Pa.



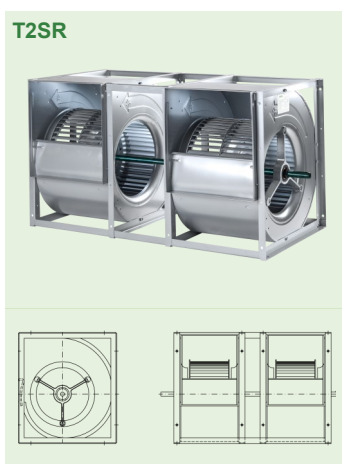
The construction of **semi-reinforced small series** is made with side frames and support cross-arm; and the **semi-reinforced large series** with a triangular structure frame and a bearing support. With flow rate and total pressure values up to 53.800 m<sup>3</sup>/h and 1.260 Pa.



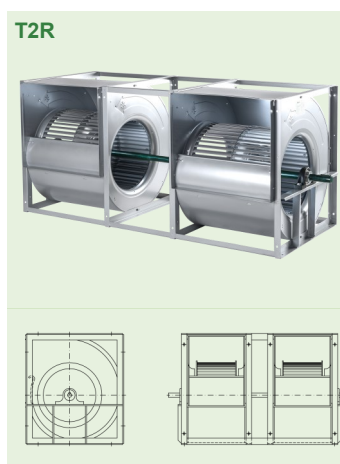
The construction of **reinforced small series** is made with cubic frame and support cross-arm; and the **reinforced large series** with a cubic structure frame and a bearing support. With flow rate and total pressure values up to 53.800 m<sup>3</sup>/h and 1.420 Pa.



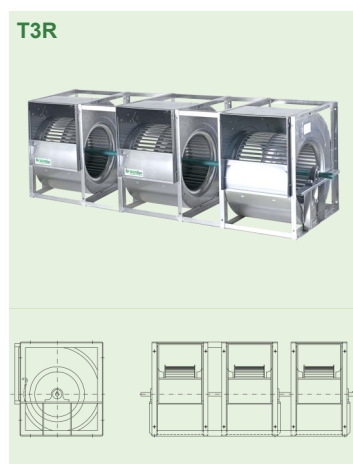
The **T2L light series** construction contains two TDA series fans mounted on the same shaft forming a unit. It allows the assembly with support feet. With flow rate and total pressure values up to 34.600 m<sup>3</sup>/h and 820 Pa.



The **T2SR semi-reinforced series** construction contains two TDA series fans mounted on the same shaft, reinforced with side frames and crossbars, forming a unit. With flow rate and total pressure values up to 34.600 m<sup>3</sup>/h and 1.010 Pa.



The **T2R reinforced series** construction contains two TDA series fans mounted on the same shaft, reinforced with cubic frames and bearing support, forming a unit. With flow rate and total pressure values up to 107.600 m<sup>3</sup>/h and 1.320 Pa.



The **T3R reinforced series** construction contains three TDA series fans mounted on the same shaft, reinforced with cubic frames and bearing support, forming a unit. With flow rate and total pressure values up to 161.400 m<sup>3</sup>/h and 950 Pa.



## Applications



**Air Conditioning**



**Ventilation**



**Parking Ventilation**

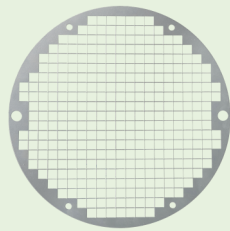


**Shopping Centers**

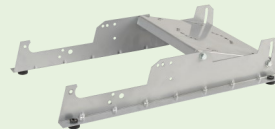
## Accessories (optionals)



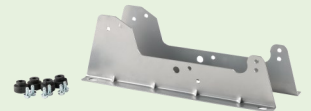
**Motor Support**



**Inlet Guard**



**Motor Support Bench**



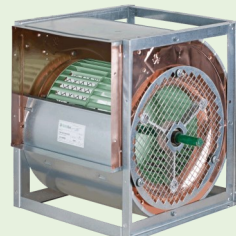
**Support Feet**



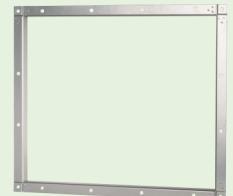
**Sliding Motor Base**



**EPOXY Painting**



**Anti-Sparks ATEX**



**Outlet Flange**

## Tecnifan Worldwide



CL. INVIERNO, 54 (P.I. Las Monjas)

E. 28850 TORREJON DE ARDOZ - MADRID

Tel: +34 91 656 61 78 Fax: +34 91 656 07 94

**tecnifan@tecnifan.es - www.tecnifan.es**

