



Management
System
ISO 9001:2008

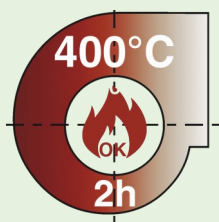
www.tuv.com
ID 9105010483



TSA F

Certified 400°C/2h

Single Inlet Forward-Blade Centrifugal Fans
Certified UNE-EN 12101-3 Standard



CE
0370.CPR.0463

The TSA family, single inlet centrifugal fans, is manufactured in galvanized steel Z-275, and prepared for belt driven transmission. The special F series refers to the certification by an official laboratory, declaring that the fans are able to operate at 400°C during 2 hours under normal conditions, according to the standard UNE-EN 12101-3.

The TSA F series features include:

- High temperature bearings, with cast iron bridge support type.
- Cubic reinforced frames, which provide great rigidity and allow the assembly in four possible orientations by hand.
- Forward curved blade type impellers, manufactured through a system of mechanical latching with inserted blades which provides great rigidity and high performance.

The range of TSA F models covers nine sizes, from 9/4 to 30/14, with air-flow values up to 28.000 m³/h and static pressures up to 1.200 Pa.

“TSA F fans have been tested according to UNE-EN 12101-3 standard and have CE marking, certified by Applus⁺ certification technology center”.



Quality features

Side reinforcements

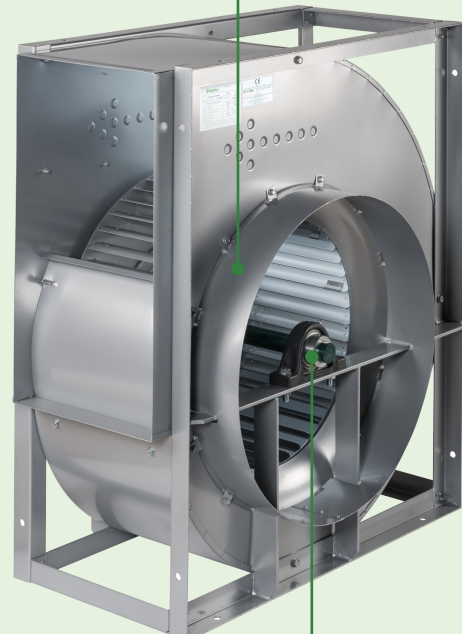
Assembled on the blind plate to avoid possible deformations at high temperatures.

Side plates

They are built in a single piece. On the transmission side, the plate is blind with a central drill for the positioning of the shaft; the inlet cone is embedded in the suction side plate.

Circular flange

A circular flange is installed on the inlet side plate to facilitate the connection to the duct.



Bearings support

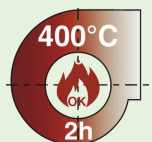
The bearings are supported by a reinforced frame, specially designed to give rigidity and stability to the whole assembly.

Cubic frame

The reinforced structure provides great rigidity and allows the assembly in four possible orientations by hand.

Bearings

Bearings are stiff, self-aligning ball bearings type, sealed and lubricated permanently, with cast iron bridge support type. On the inlet side, the bearing is a special high temperature type.



Components that make the difference



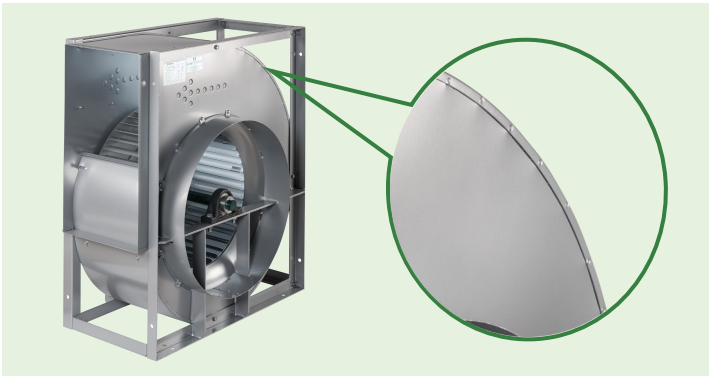
Impeller

Tecnifan's impellers are manufactured through a system of mechanical latching (tabbed construction), which gives them great rigidity and allows to achieve an excellent mechanical performance. All the impellers are balanced after its manufacture according to VDI standard 2060 (balance degree Q 6.3).

High temperature bearings

The bearings used by Tecnifan are supplied by first-class brands in the market, multinational companies providing "know-how", quality and a large experience in the worldwide market.

The high temperature bearing is composed of high quality cast iron support, excentric ring and inner ring extended on both sides.



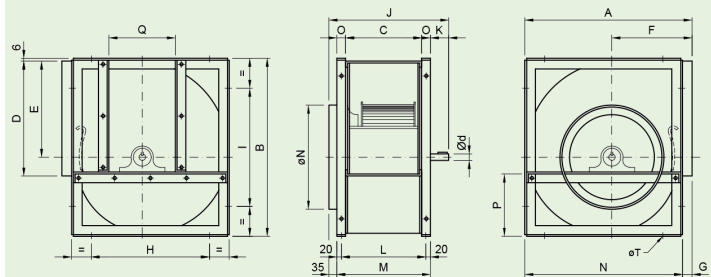
Housing and welding system

The housing is composed by two side-plates manufactured in one single piece, pinned to the casing by electric spot welding. All the welding spots are covered with an anti-rust painting. The pressed inlet cones are designed aerodynamically to increase efficiency. This assembly system, together with the thickness of the used sheet and the stamped ribs in the sheet itself, provide great strength and rigidity to the housing assembly.

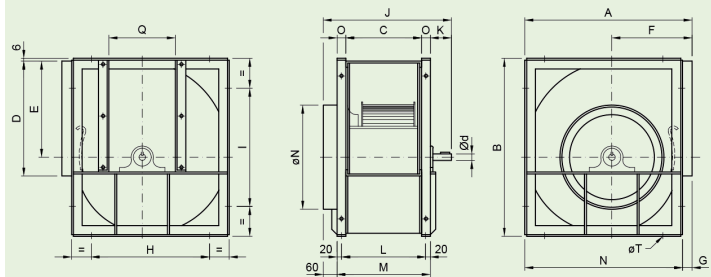
Dimensions

Fan Size	A	B	C	D	E	F	G	H	I	J	K	L	M	N	O	Ød	ØN	ØT
Small Series																		
TSA-9/4-F	380	404	169	265	218	180	25	280	327	307	55	193	217	355	24	20	249	10
TSA-10/5-F	432	452	182	290	245	207	30	326	377	320	55	206	230	402	24	20	279	10
TSA-12/6-F	505	534	210	341	292	236	30	384	443	368	65	240	268	475	29	25	314	10
TSA-15/7-F	585	622	269	402	343	384	30	460	531	432	70	300	327	553	29	25	399	10
TSA-18/9-F	700	754	298	480	414	460	35	553	641	473	70	333	368	666	35	25	449	10
Large Series																		
TSA-20/10-F	840	935	315	604	523	372	45	595	735	550	95	359	395	795	40	35	559	12
TSA-22/11-F	908	1019	348	692	571	399	45	663	819	583	95	392	428	863	40	35	629	12
TSA-25/13-F	998	1142	407	793	640	426	45	753	942	642	95	451	487	953	40	35	709	12
TSA-30/14-F	1204	1374	464	933	778	516	45	959	1174	734	130	508	544	1159	40	40	799	12

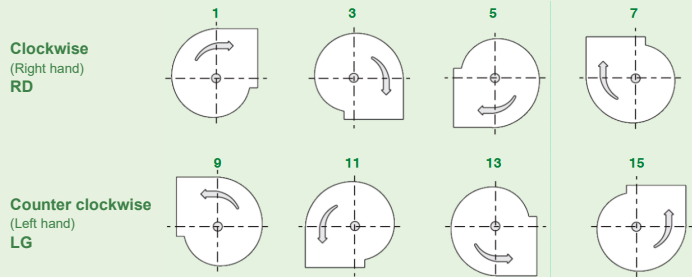
Small Series



Large Series



Orientation (as seen from transmission side)



Applications



Kitchens



Industry



Parking Ventilation

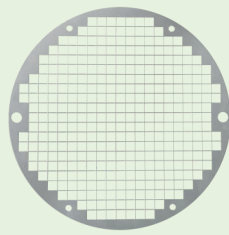


Shopping Centers

Accessories (optionals)



Outlet Flange



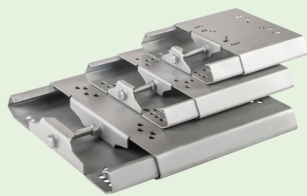
Inlet Guard



Inspection Door



Drain Plug



Sliding Motor Base



EPOXY Painting



Anti-sparks ATEX



Mounted Outlet Flange

Tecnifan Worldwide



CL. INVIERNO, 54 (P.I. Las Monjas)
E. 28850 TORREJON DE ARDOZ - MADRID
Tel: +34 91 656 61 78 Fax: +34 91 656 07 94
tecnifan@tecnifan.es - www.tecnifan.es