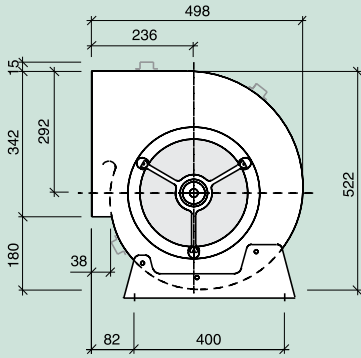
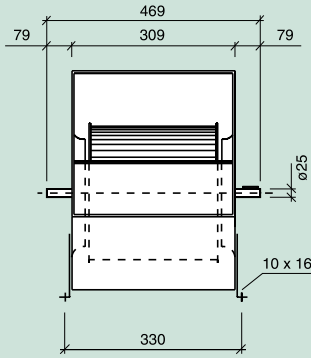


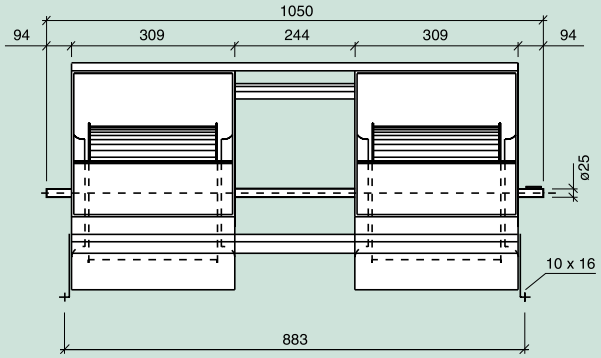
Serie



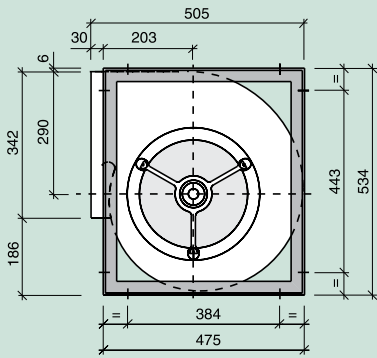
L



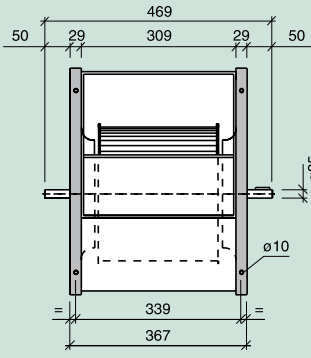
T2L



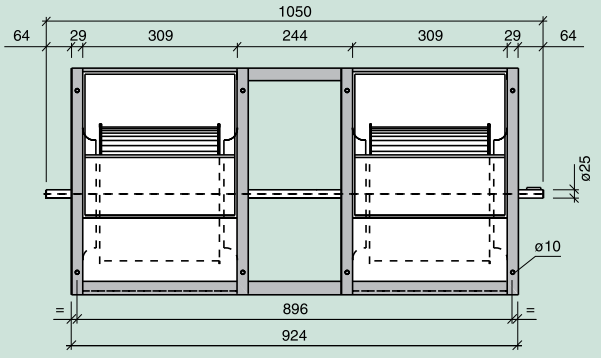
Serie



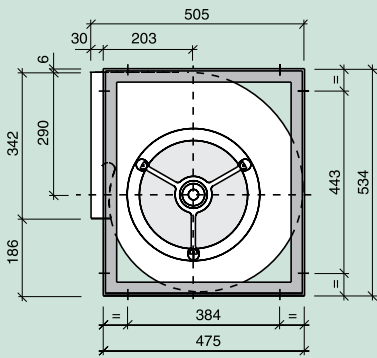
SR



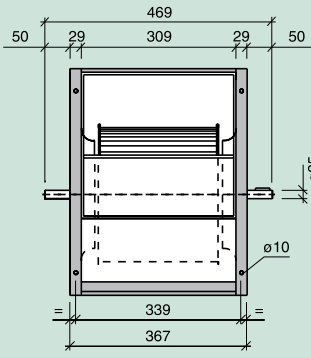
T2SR



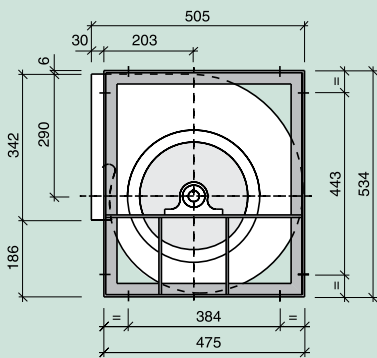
Serie



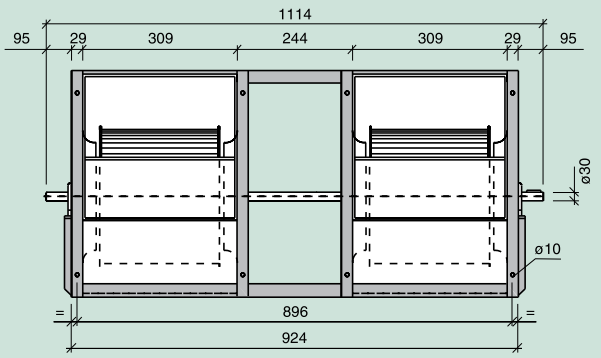
R



Serie



T2R



| Serie - Series - Serie | | L | SR | R | T2L | T2SR | T2R | T3R | |
|---|--------------------------|--|---------------------------------|-------------------|-------------------|-------------------------|-------------------------|-------------------------|-------------------------|
| Límite de empleo. Operational limit. Limite d'emploi. | n max. motor max. | rpm kW | 1500 2.2 | 1600 3 | 1800 3.5 | 1400 3 | 1600 3.5 | 1800 5.5 | 1400 7 |
| Velocidad tangencial. Tip speed. Vitesse tangentielle. | u | m/s | n (min ⁻¹) x 0.0169 | | | | | | |
| Momento de inercia. Moment of inertia. Moment d'inertie. | PD ² /4 | Kg m ² | 0.09 | 0.09 | 0.09 | 0.18 | 0.18 | 0.18 | 0.27 |
| Peso del ventilador. Fan weight. Poids du ventilateur. | | Kg | 13.5 | 17 | 18 | 30 | 33 | 44.5 | 70 |
| Coefficientes de corrección. Correction factors. Coefficients de correction. | V P _A n | m ³ /h kW min ⁻¹ | x 1 x 1 x 1 | x 1 x 1 x 1 | x 1 x 1 x 1 | x 2 x 2.15 x 1.05 | x 2 x 2.15 x 1.05 | x 2 x 2.15 x 1.05 | x 3 x 3.25 x 1.08 |

