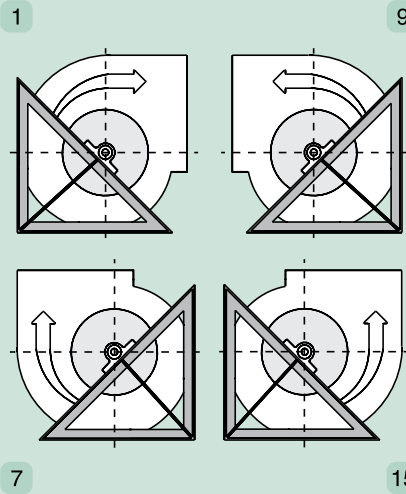
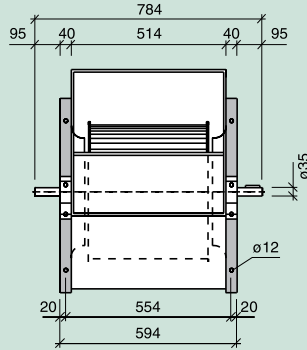
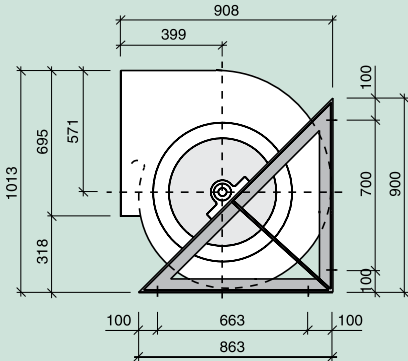


Serie

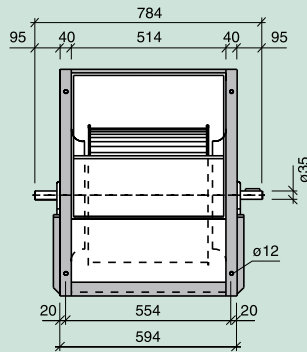
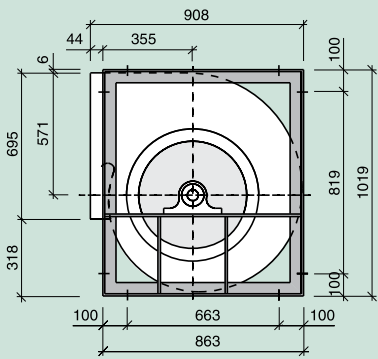
SR

Solamente en orientaciones



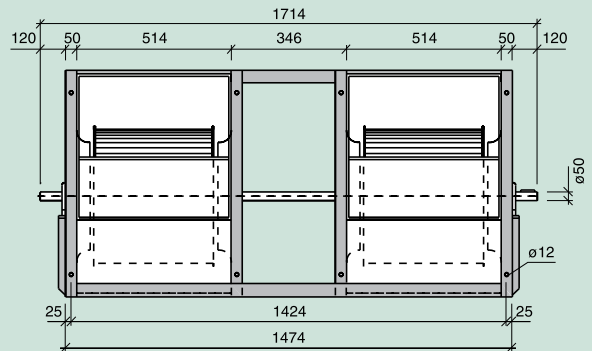
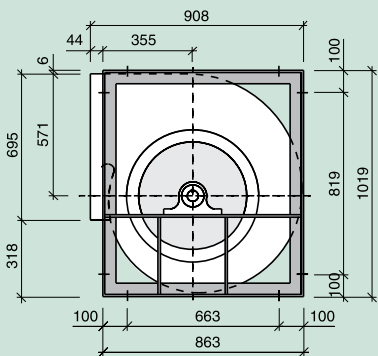
Serie

R



Serie

T2R



| Serie - Series - Serie | | | SR | R | | T2R | T3R |
|---|--------------------------|--|---------------------------------|-------------------|--|-------------------------|-------------------------|
| Límite de empleo. Operational limit. Limite d'emploi. | n max. motor max. | rpm kW | 800 8 | 900 11.5 | | 850 20 | 800 23 |
| Velocidad tangencial. Tip speed. Vitesse tangentielle. | u | m/s | n (min ⁻¹) x 0.0314 | | | | |
| Momento de inercia. Moment of inertia. Moment d'inertie. | PD ² /4 | Kg m ² | 1.47 | 1.47 | | 2.94 | 4.41 |
| Peso del ventilador. Fan weight. Poids du ventilateur. | | Kg | 66 | 76 | | 180 | 289 |
| Coefficientes de corrección. Correction factors. Coefficients de correction. | V P _A n | m ³ /h kW min ⁻¹ | x 1 x 1 x 1 | x 1 x 1 x 1 | | x 2 x 2.15 x 1.05 | x 3 x 3.25 x 1.08 |

