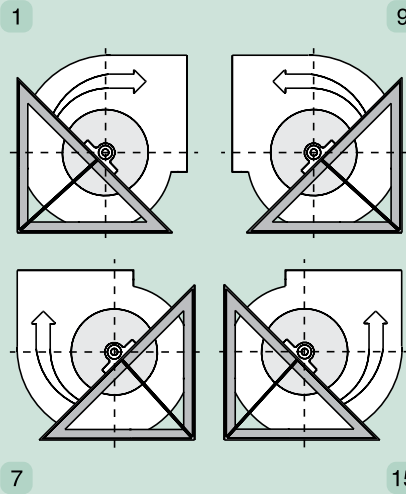
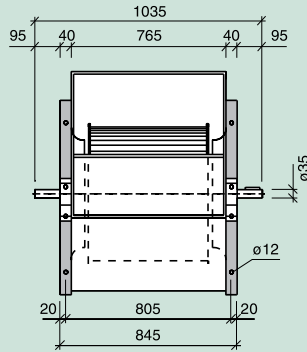
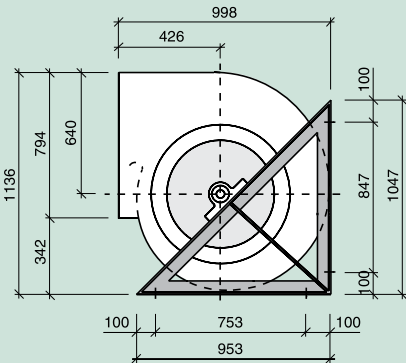


Serie

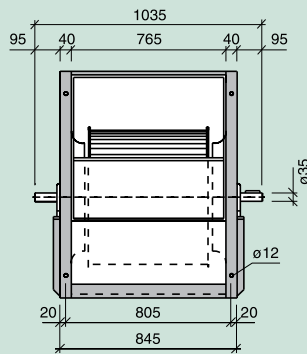
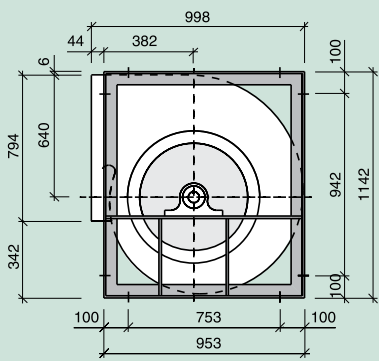
SR

Solamente en orientaciones



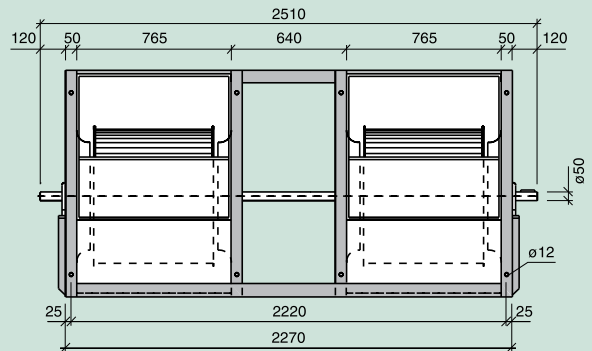
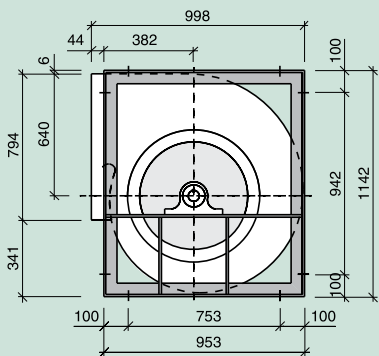
Serie

R



Serie

T2R



| Serie - Series - Serie | | | SR | R | | T2R | T3R |
|---|--------------------------|--|---------------------------------|-------------------|--|-------------------------|-------------------------|
| Límite de empleo. Operational limit. Limite d'emploi. | n max. motor max. | rpm kW | 550 9 | 700 13 | | 650 23 | 600 26 |
| Velocidad tangencial. Tip speed. Vitesse tangentielle. | u | m/s | n (min ⁻¹) x 0.0351 | | | | |
| Momento de inercia. Moment of inertia. Moment d'inertie. | PD ² /4 | Kg m ² | 2.49 | 2.49 | | 4.98 | 7.46 |
| Peso del ventilador. Fan weight. Poids du ventilateur. | | Kg | 100 | 113 | | 260 | 425 |
| Coefficientes de corrección. Correction factors. Coefficients de correction. | V P _A n | m ³ /h kW min ⁻¹ | x 1 x 1 x 1 | x 1 x 1 x 1 | | x 2 x 2.15 x 1.05 | x 3 x 3.25 x 1.08 |

